

## Red House® Slim Fit Pinpoint Oxford Non-Iron Shirt. RH620



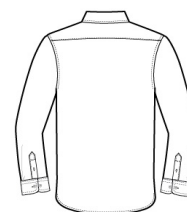
For those who prefer a slim (but not tight) fit that sits closer to the body. Crafted from 3.8-ounce, 100% cotton, this elegant pinpoint oxford has a wrinkle-resistant finish so you always look your best-no iron required. Details like taped seams, adjustable cuffs, button-through sleeve plackets, RH engraved buttons and a shirrtail hem complement the sharp look. Open collar with removable stays.

### CARE INSTRUCTIONS

Machine wash warm with like colors, only non-chlorine bleach if needed, tumble dry low, remove promptly & hang, warm iron if needed.

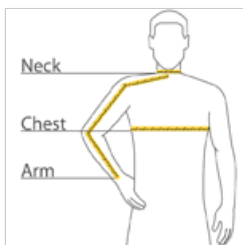


front



back

### HOW TO MEASURE



#### CHEST

With arms down at sides, measure around the upper body, under arms and over the fullest part of the chest.

#### NECK

Measure around the base of the neck, inserting a finger or two between the tape and neck for comfort.

#### ARM

Place hand on hip. Start at the center of the back of the neck and measure across the shoulder, to the elbow, and then down to the wrist.

### SIZE CHART

	XS	S	M	L	XL	2XL	3XL	4XL
Chest	32-34	35-37	38-40	41-43	44-46	47-49	50-53	54-57
Neck	14 1/2 - 15	15 - 15 1/2	15 1/2 - 16	16 - 16 1/2	16 1/2 - 17	17 - 17 1/2	17 1/2 - 18	18 - 18 1/2
Arm	30 1/2	32	34	35	36 1/2	37 1/2	38 1/2	39 1/2

### COLOR INFORMATION



Blue  
PMS 2134C



Charcoal  
PMS COOL GREY  
11C



Vintage Navy  
PMS 2374C



White  
PMS WHITE