

## Red House® Ladies Nailhead Non-Iron Shirt. RH470



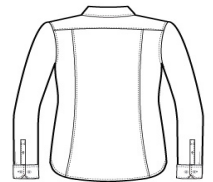
Thoroughly updated, this crisp nailhead shirt has a silky feel and a wrinkle-resistant finish for exceptional non-iron performance. 4-ounce, 60/40 cotton/polyester with taped seams, RH engraved buttons and a shirttail hem to elevate the office-ready look. Classic feminine styling with an open collar, bust darts and back seaming. Notched adjustable cuffs and button-through sleeve plackets.

### CARE INSTRUCTIONS

Machine wash cold with like colors, only non-chlorine bleach when needed, tumble dry low, warm iron if needed.

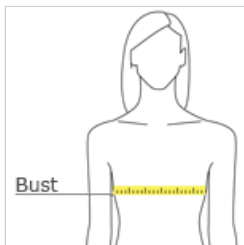


front



back

### HOW TO MEASURE



#### BUST

With arms down at sides, measure around the upper body, under arms and around the fullest part of the bust.

### SIZE CHART

	XS	S	M	L	XL	XXL	3XL	4XL
Size	2	4/6	8/10	12/14	16/18	20/22	24/26	28/30
Bust	32-34	35-36	37-38	39-41	42-44	45-47	48-51	52-55

### COLOR INFORMATION



Black  
PMS NTR BLACK CPMS 7451C



Blue Pearl



Mediterranean Blue  
PMS 7687C



Navy  
PMS 2139C



White  
PMS WHITE