



This polo dares to tread on the edge with its slightly linear stripe and black pinpoint dot appearance.

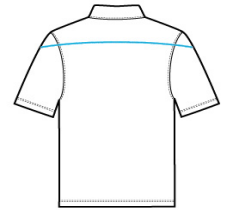
- 4.6-ounce, 73/21/6 cotton/poly/spandex jacquard jersey with stay-cool wicking technology
- OGIO heat transfer label for tag-free comfort
- Self-fabric collar
- 3-button placket with flat metal buttons
- Contrast coverstitching on back yoke and sleeves
- Set-in, open hem sleeves
- Rubber heat transfer O on left sleeve

**CARE INSTRUCTIONS**

Machine wash cold with like colors. Do not bleach. Tumble dry low. Cool iron. Do not use fabric softener. Do not dry clean.

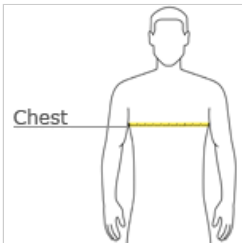


front



back

**HOW TO MEASURE**



**CHEST**

With arms down at sides, measure around the upper body, under arms and over the fullest part of the chest.

**SIZE CHART**

|       | XS    | S     | M     | L     | XL    | 2XL   | 3XL   | 4XL   |
|-------|-------|-------|-------|-------|-------|-------|-------|-------|
| Chest | 32-34 | 35-37 | 38-40 | 41-43 | 44-46 | 47-49 | 50-53 | 54-57 |

**COLOR INFORMATION**



Blacktop Heather  
PMS 7540C



Blue Heather  
PMS NO MATCH



Grey Heather  
PMS NO MATCH