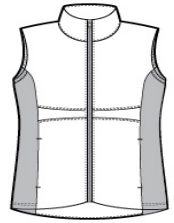


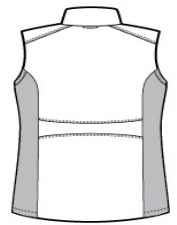


Insulation and stretch soft shell side panels make this vest a versatile, flattering and cozy cold-weather layer.

- Can be zipped in and secured by snap attachments inside an outer Collective layer
- 100% polyester woven shell
- 100% polyester knit bonded to a water-resistant film insert and a 100% polyester microfleece lining at side panels and under arms
- 100% polyester printed lining with insulation behind the outer woven shell
- Slightly longer length
- Zip-through cadet collar
- Vislon® center front zipper
- Front and back waist details
- Stretch side panels
- Open front pockets
- Port Pocket™ for easy embroidery access
- Open hem
- Tulip hem



front



back

**CARE INSTRUCTIONS**

Machine wash cold with like colors; do not use fabric softener; tumble dry low; remove promptly; only non-chlorine bleach when needed; cool iron if necessary; do not dry clean.

**SIZE CHART**

	XS	S	M	L	XL	XXL	3XL	4XL
Size	2	4/6	8/10	12/14	16/18	20/22	24/26	28/30
Body Length	29 1/4	29 3/4	30 1/4	30 3/4	31 1/4	31 3/4	32 1/4	32 3/4
Bust	17 3/4	18 3/4	19 3/4	21 1/4	22 3/4	24 1/4	26 1/4	28 1/4

**COLOR INFORMATION**



Deep Black  
PMS NTR BLACK CPMS 7540C



Graphite  
PMS 7540C



White  
PMS WHITE