



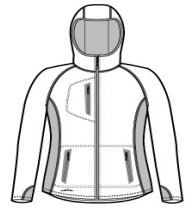
# Eddie Bauer® Ladies Sport Hooded Full-Zip Fleece Jacket. EB245



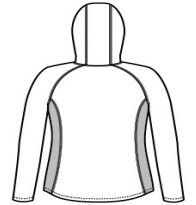
This athletic-inspired, midweight jacket pairs smooth-faced fleece with stretch side panels for comfort during active adventures. Reverse coil zippers, welded zippered chest pocket and welded front zippered pockets. Contrast Eddie Bauer logo heat transfer on right hem. Made of 12.8-ounce, 100% polyester diamond doobby fleece with an anti-pill finish inside. 88/12 poly/spandex side panels.

### CARE INSTRUCTIONS

Machine wash cold with like colors, only non-chlorine bleach when needed, tumble dry low, warm iron if necessary.

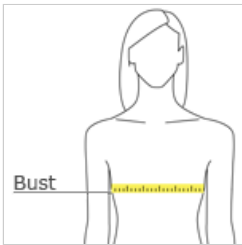


front



back

### HOW TO MEASURE



### BUST

With arms down at sides, measure around the upper body, under arms and around the fullest part of the bust.

### SIZE CHART

	XS	S	M	L	XL	2XL	3XL	4XL
Size	2	4/6	8/10	12/14	16/18	20/22	24/26	28/30
Bust	32-33	34-35	36-37	38-40	41-43	44-46	47-49	50-52

### COLOR INFORMATION



Black  
PMS NTR BLACK C



Grey Cloud/ Grey  
Steel/ Expedition



Metal Grey/ Grey  
Steel/ Citron

Blue  
PMS COOL GREY 10 C