



District® Women's Perfect Tri® French Terry Full-Zip Hoodie. DT456



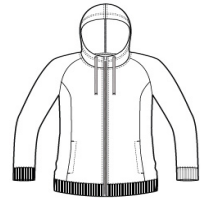
With perfect tri blend softness, this hoodie is versatile and comfortable.

- 8.25-ounce, 61/31/8 ring spun combed cotton/poly/rayon
- Tear-away label
- Unlined hood
- Natural drawcords, back neck tape and zipper tape
- YKK zipper
- Front and back seaming
- Elongated length
- Split hem detail
- 1x1 rib knit hem and cuffs

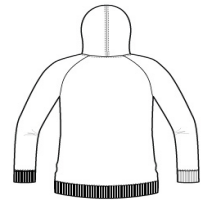
**

CARE INSTRUCTIONS

Machine wash cold with like colors, only non-chlorine bleach when needed, tumble dry low, warm iron if necessary.

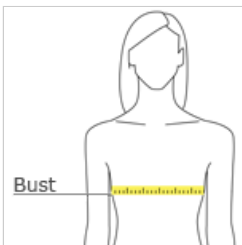


front



back

HOW TO MEASURE



BUST

With arms down at sides, measure around the upper body, under arms and around the fullest part of the bust.

SIZE CHART

| | XS | S | M | L | XL | XXL | 3XL | 4XL |
|------|-------|-------|-------|-------|-------|-------|-------|-------|
| Size | 2 | 4/6 | 8/10 | 12/14 | 16/18 | 20/22 | 24/26 | 28/30 |
| Bust | 32-34 | 35-36 | 37-38 | 39-41 | 42-44 | 45-47 | 48-51 | 52-55 |

COLOR INFORMATION



Black
PMS NTR BLACK CPMS COOL GRAY 10C



Grey Frost
CPMS COOL GRAY



New Navy
PMS 533C