



District® Women's Perfect Tri® Hooded Cardigan. DT156



This cardigan is soft and perfect for layering.

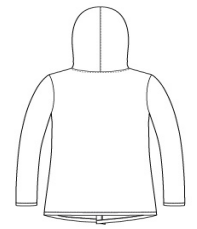
- 4.5-ounce, 50/25/25 poly/ring spun combed cotton/rayon, 32 singles
- Coverstitch details
- Tear-away label
- Back neck taping
- Angled front hem

CARE INSTRUCTIONS

Machine wash cold with like colors, only non-chlorine bleach when needed, tumble dry low, warm iron if necessary.

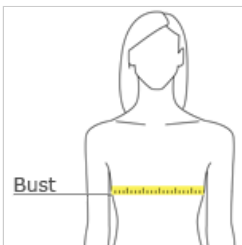


front



back

HOW TO MEASURE



BUST

With arms down at sides, measure around the upper body, under arms and around the fullest part of the bust.

SIZE CHART

	XS	S	M	L	XL	XXL	3XL	4XL
Size	2	4/6	8/10	12/14	16/18	20/22	24/26	28/30
Bust	32-34	35-36	37-38	39-41	42-44	45-47	48-51	52-55

COLOR INFORMATION



Black Frost
PMS 426C



Grey Frost
PMS COOL GRAY
10C